



Communal Decorations and Repairs

Highlights

Axis was employed by our client to deliver communal decorations and repairs at two properties in the London Borough of Croydon. One property functions as supported living with 22 flats, while the other is a general residential block of 26 apartments. The works form part of a planned and cyclical decorations contract.

Our team began works on the first property with internal redecorations to the walls and ceilings. We also repaired and redecorated the staircases alongside the handrails. The team's scope extended to redecorating the radiators, built-in seating, and works in the lounge area. We also repainted the window frames and communal doors within the building.

Our communal decorations and repairs continued at the second property. We completed a programme of external repainting to the soffits, guttering and downpipes. The team also painted all of the windowsills.

Specifications

- Redecoration of walls and ceilings
- Staircases and handrails
- Window frames and communal doors
- External repainting
- Soffits, gutters and downpipes
- UPVC fascias

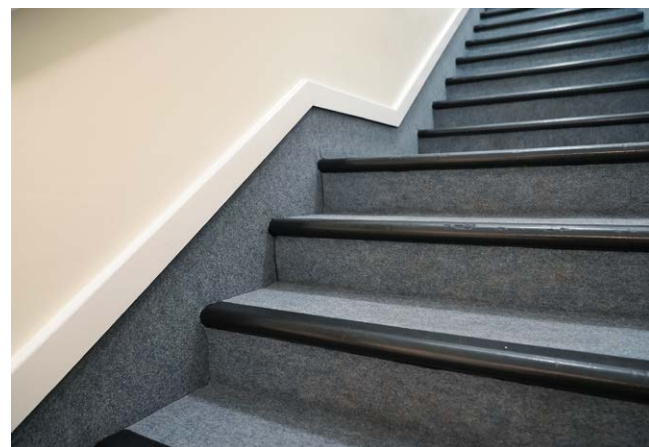
12 weeks duration



We replaced and redecorated the fascias where they had been rotting badly at the back. Cutting away the dead wood, we replaced them with new UPVC fascias. The team also provided a clean of the areas alongside two coats of paint on the front side. We then painted the bin doors and the lead dressing.

Some of the challenges presented within this communal decorations and repairs project included COVID-19 and Brexit. Brexit saw a delay due to the lack of guttering material at the site. However, our team worked to overcome the delays as quickly as possible. Regular inspections were carried out with our site team and chosen surveyors to ensure the project stayed on track.

Despite the challenges, we future-proofed the properties within the budgetary requirements of the client.



Contact

joseph.hayes@axiseurope.com

020 3597 2545

axiseurope.com